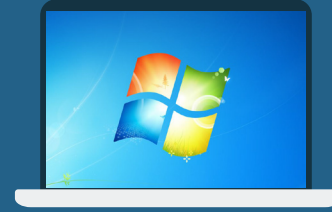


Simsol is a Windows based software program that's installed on your local hard drive and runs through your Windows device. Simsol does not run through your internet browser.



We offer 2 types of licenses: a manual license and a MySimsol license. Both licenses offer the exact same functionality, but there are a couple of differences.

MYSIMSOL

Payment is made online through mysimsol.com



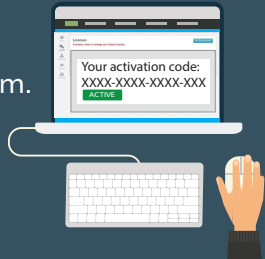
PAYMENTS



Payment is made by calling our customer service team.



Licenses are renewed online via mysimsol.com.



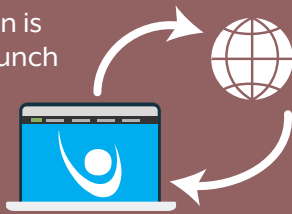
LICENSE RENEWALS



Licenses are renewed by calling our customer service team.



An internet connection is required when you launch the program very few days to verify your license is up-to-date.



LICENSE VERIFICATION



Verification is automatic when you launch the program through a code our customer service team provides you when you extend your license.



You control when you make payments and when you renew the license, anytime. You don't have to contact us.



ADVANTAGE



You don't have to have an internet connection to verify your license is up-to-date.



You have to have an internet connection when you launch the program every few days to verify your license is active.



DISADVANTAGE



You have to pick up the phone and call our customer service team during business hours in order to make a payment and renew your license.

